



Flygt 2400

Table of Contents

Introduction.....	2
Specially approved products.....	2
Product Description.....	3
The data plate.....	3
Product denomination.....	5
Exploded Views.....	6
Drive unit.....	6
Support bearing, labels and mechanical seals.....	7
Connection housing and cable entry.....	8
Stand.....	11
MT.....	12
HT.....	13
Spare Parts.....	14
List of parts.....	14

Introduction

Purpose of this manual

The purpose of this manual is to provide necessary information on spare parts and accessories order.

Disclaimer

Always use genuine Flygt parts. The use of other spare parts or accessories can invalidate any claims for warranty or compensation. Xylem does not take any responsibility for damages that are caused by the use of non-original parts. For more information, contact your local sales and service representative.

Data for ordering spare parts

The following information is needed for spare part orders:

- Serial number of the product
- Part number
- Quantity of bulk material, see * in tables

Specially approved products

Qualification of personnel

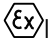

Only Xylem or Xylem-authorized service personnel may undertake repair work on Ex-approved products.

Dimensional accuracy inspection

Spare parts marked with (Ex) after the part number are subject to dimensional accuracy inspection.

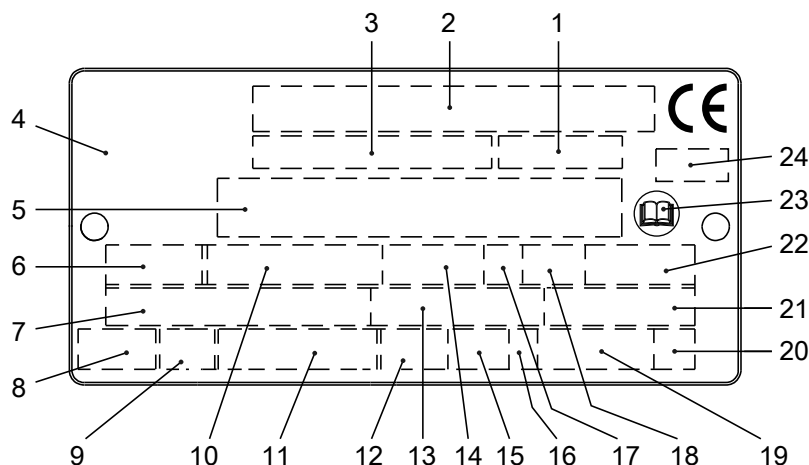
Product Description

Products included

Pump model	Approvals
2400.402	Standard
2400.490	MSHA (Mine Safety and Health Administration, USA): 30CFR Part 7, Approval number 7J-99016-0
2400.591	European Norm (EN) <ul style="list-style-type: none"> • ATEX Directive • EN 60079-0:2009, EN 60079-1:2007, EN 13463-1:2009, EN 13463-5:2011 •  I M2 c Ex d I Mb •  II 2 G c Ex d IIB T4 Gb IEC <ul style="list-style-type: none"> • IECEx scheme • IEC 60079-0, IEC 60079-1 • Ex d I • Ex d IIB T4

The data plate

The data plate is a metal label that is located on the main body of the products. The data plate lists key product specifications. Specially approved products also have an approval plate.



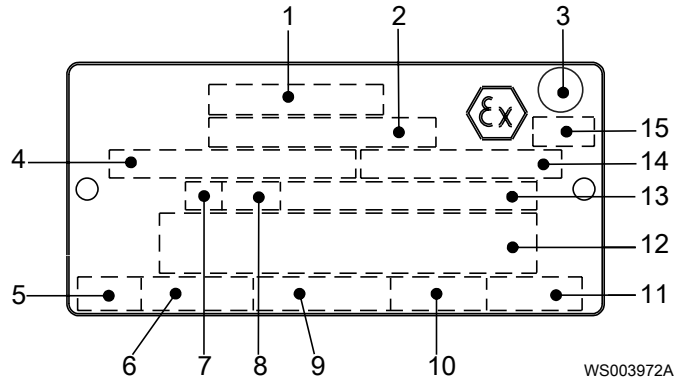
1. Curve code or Propeller code
2. Serial number, see [Product denomination](#) (page 5)
3. Product number
4. Country of origin
5. Additional information
6. Phase; type of current; frequency
7. Rated voltage
8. Thermal protection
9. Thermal class
10. Rated shaft power
11. International standard
12. Degree of protection
13. Rated current
14. Rated speed
15. Maximum submergence
16. Direction of rotation: L=left, R=right
17. Duty class
18. Duty factor

WS006257A

19. Product weight
20. Locked rotor code letter
21. Power factor
22. Maximum ambient temperature
23. Read installation manual
24. Notified body, only for EN-approved Ex products

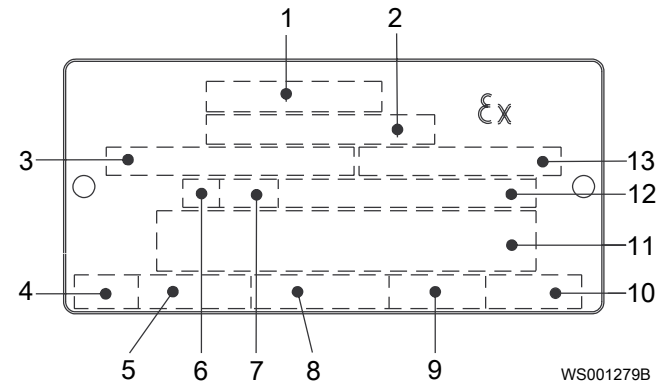
Figure 1: The data plate

The Ex approval plate



1. Approval
2. Approval authority and approval number
3. Approval for Class I
4. Approved drive unit
5. Stall time
6. Starting current/Rated current
7. Duty class
8. Duty factor
9. Input power
10. Rated speed
11. Controller
12. Additional information
13. Maximum ambient temperature
14. Serial number
15. ATEX marking

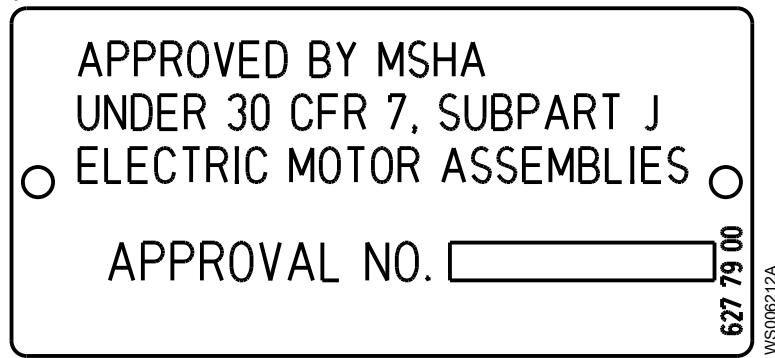
Figure 2: EN



1. Approval
2. Approval authority + approval number
3. Approved for drive unit
4. Stall time
5. Starting current/Rated current
6. Duty class
7. Duty factor
8. Input power
9. Rated speed
10. Controller
11. Additional information
12. Max. ambient temperature
13. Serial number

Figure 3: IEC

The MSHA approval plate



Product denomination

Reading instruction

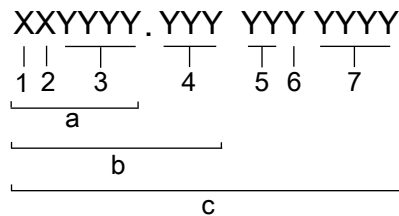
In this section, code characters are illustrated accordingly:

X = letter

Y = digit

The different types of codes are marked up with a, b and c. Code parameters are marked up with numbers.

Codes and parameters

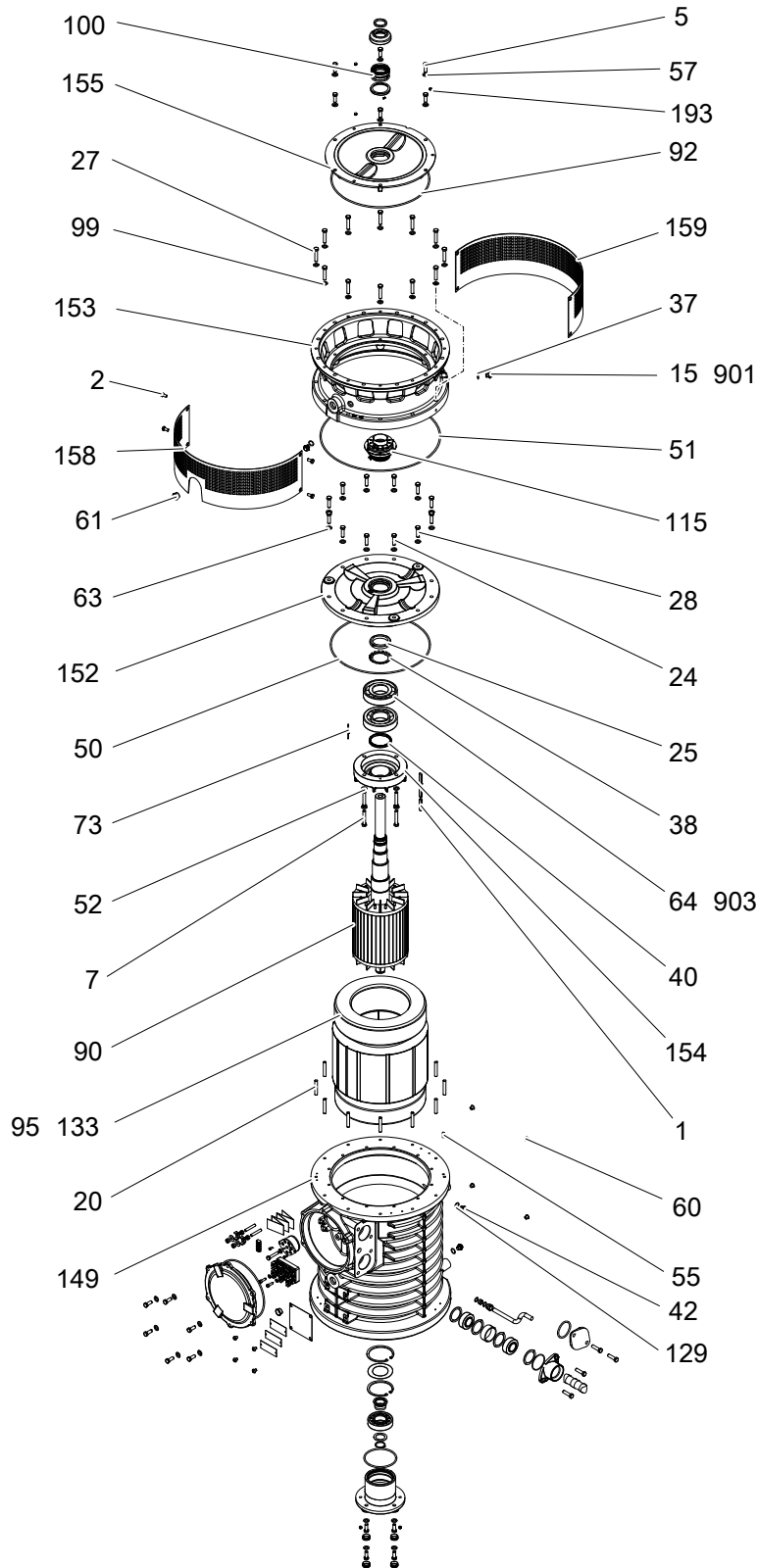


WS006265B

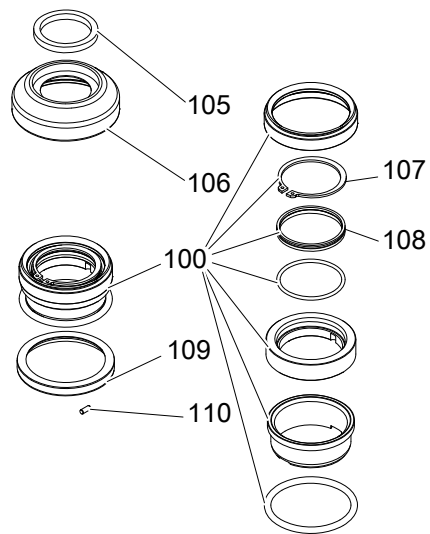
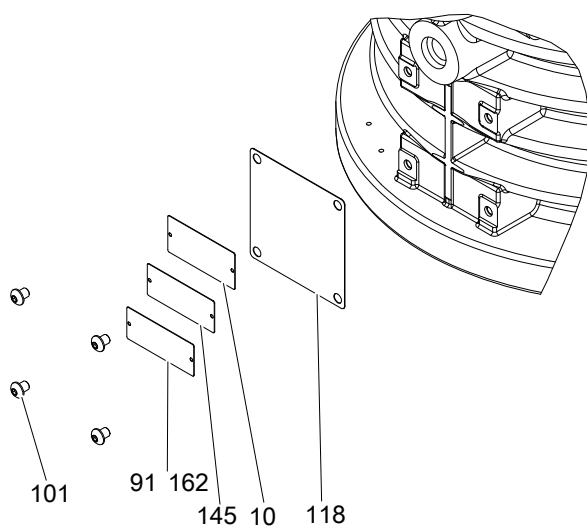
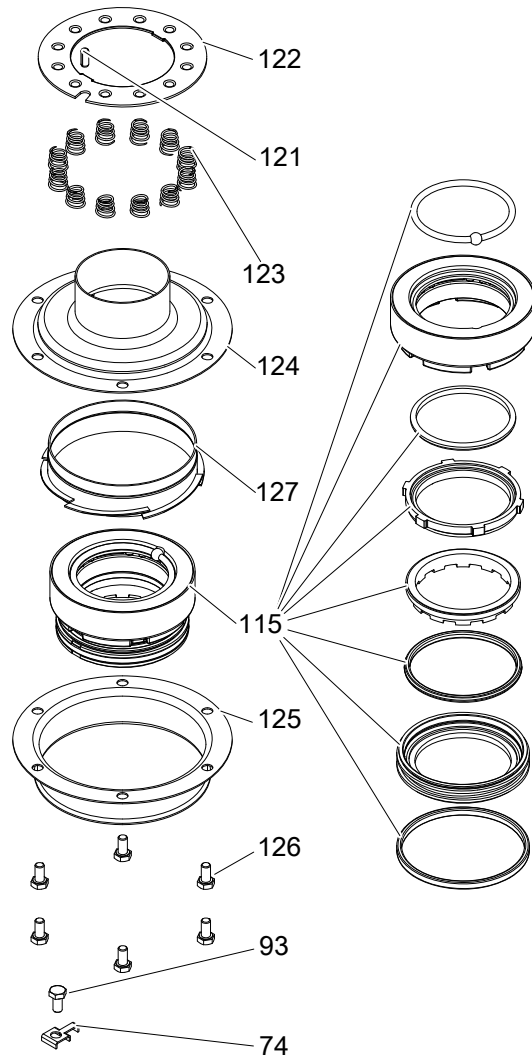
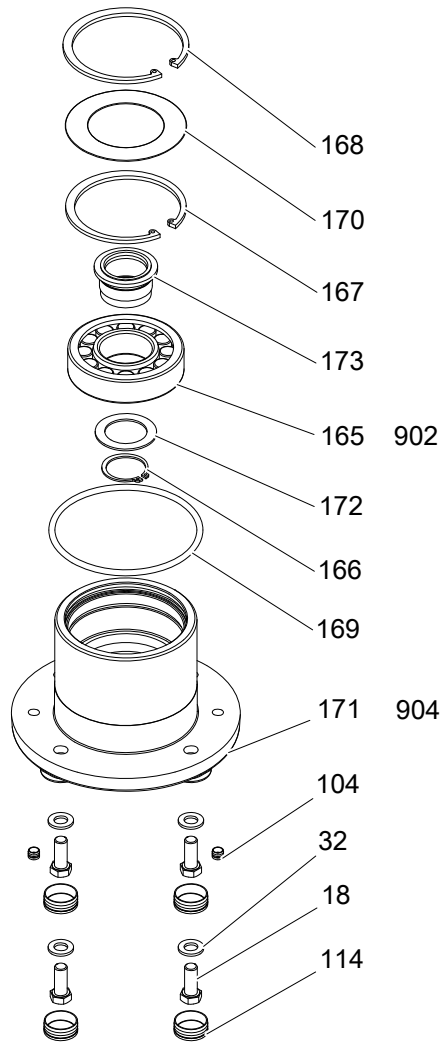
Type of Callout	Number	Indication
Type of code	a	Sales denomination
	b	Product code
	c	Serial number
Parameter	1	Hydraulic end
	2	Type of installation
	3	Sales code
	4	Version
	5	Production year
	6	Production cycle
	7	Running number

Exploded Views

Drive unit

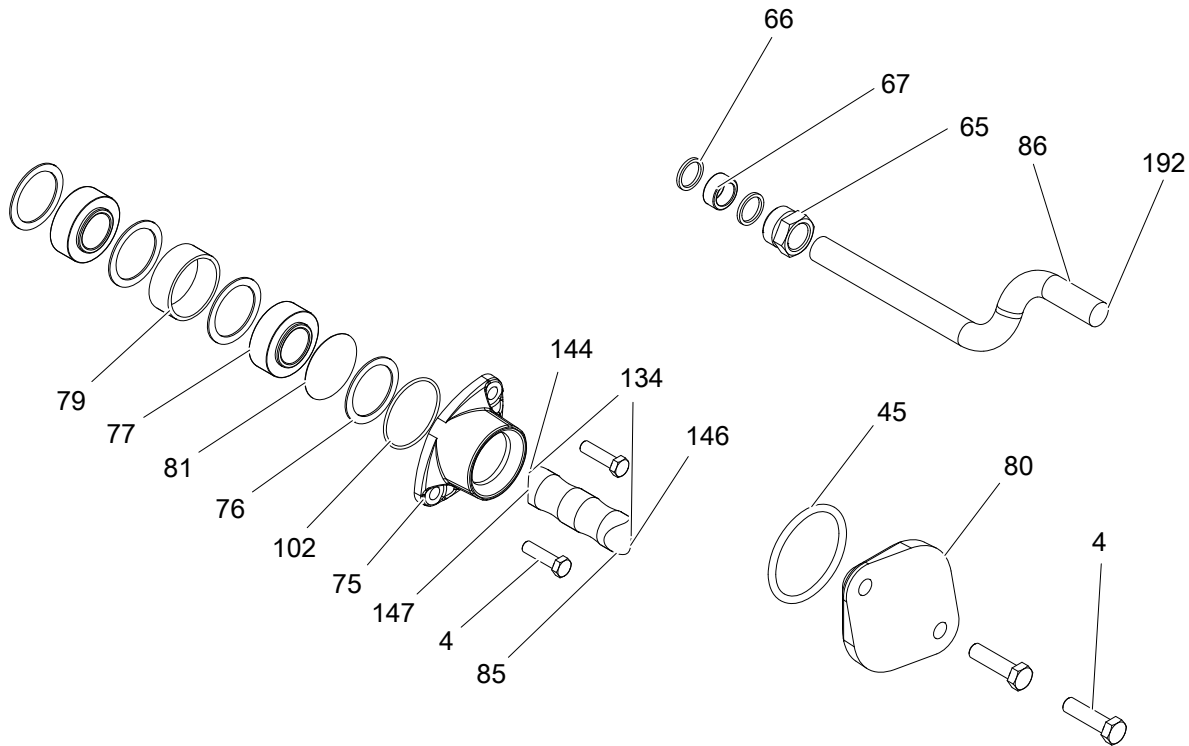
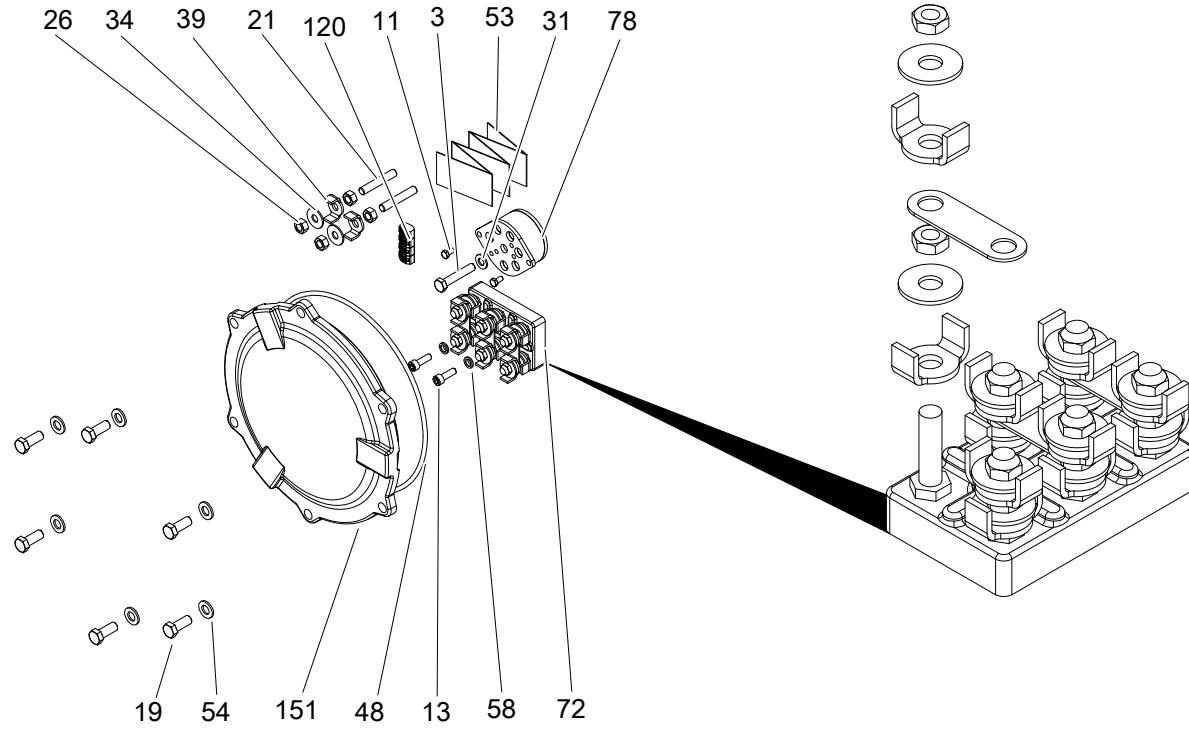


Support bearing, labels and mechanical seals



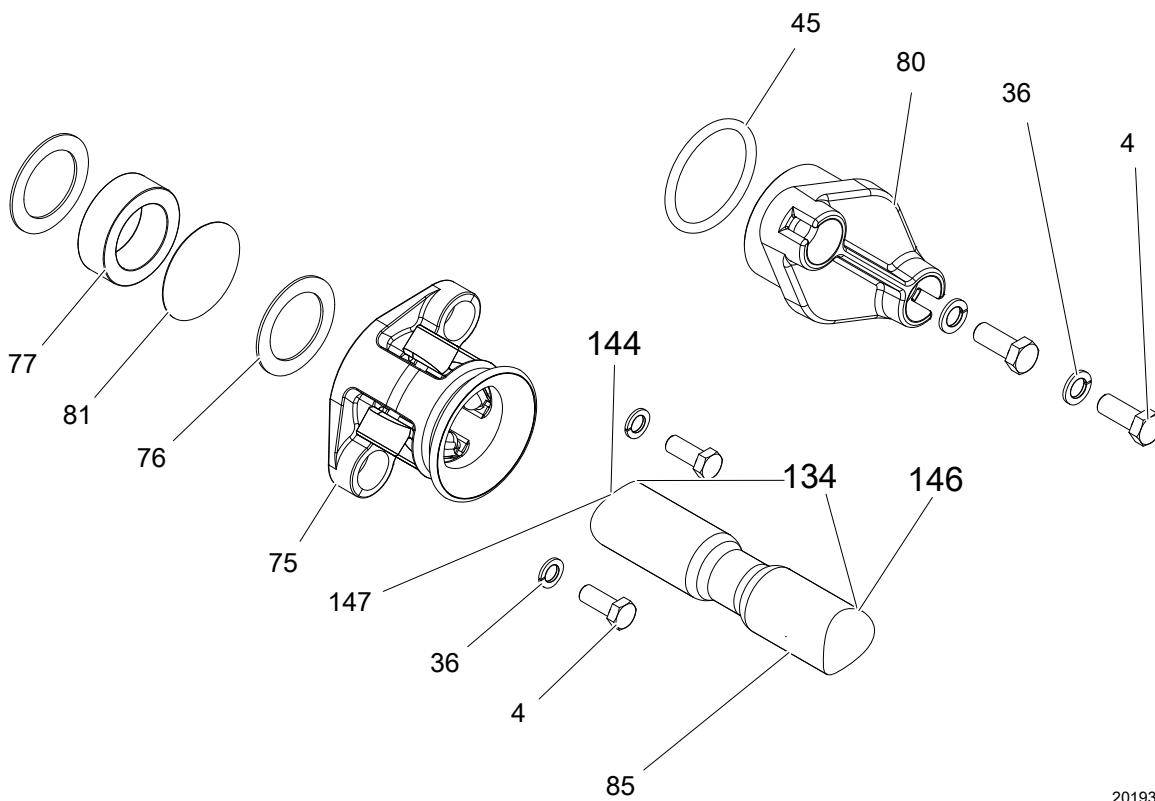
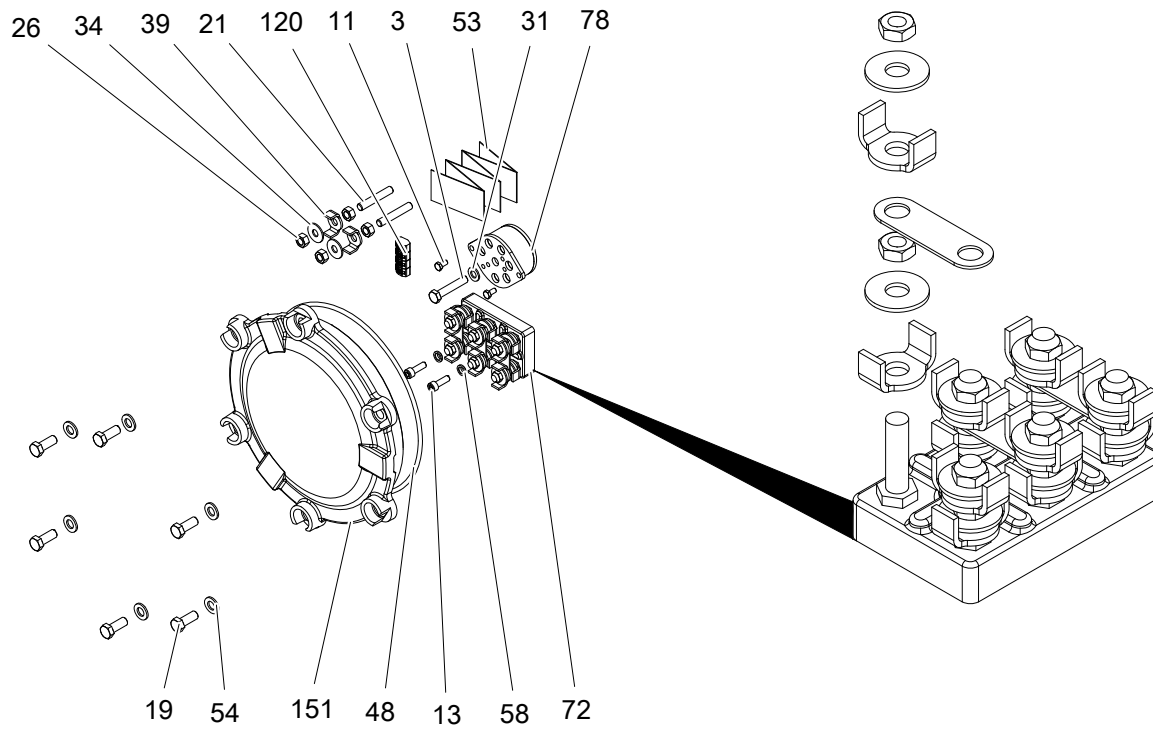
20189A

Connection housing and cable entry



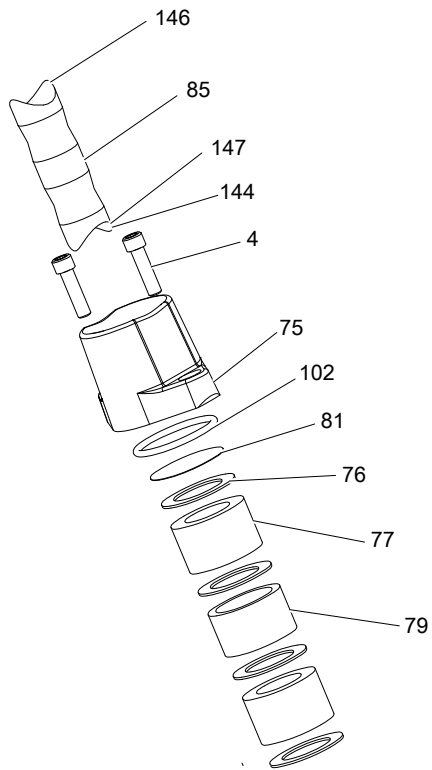
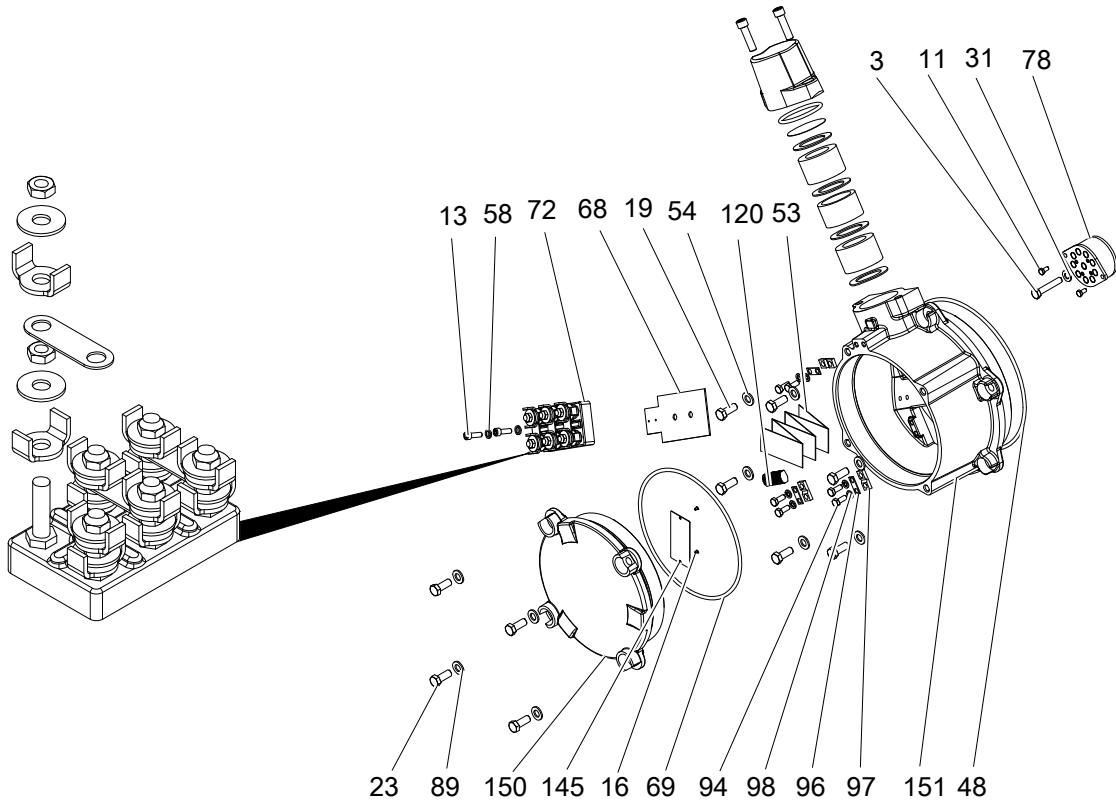
20192A

Figure 4: Standard



20193A

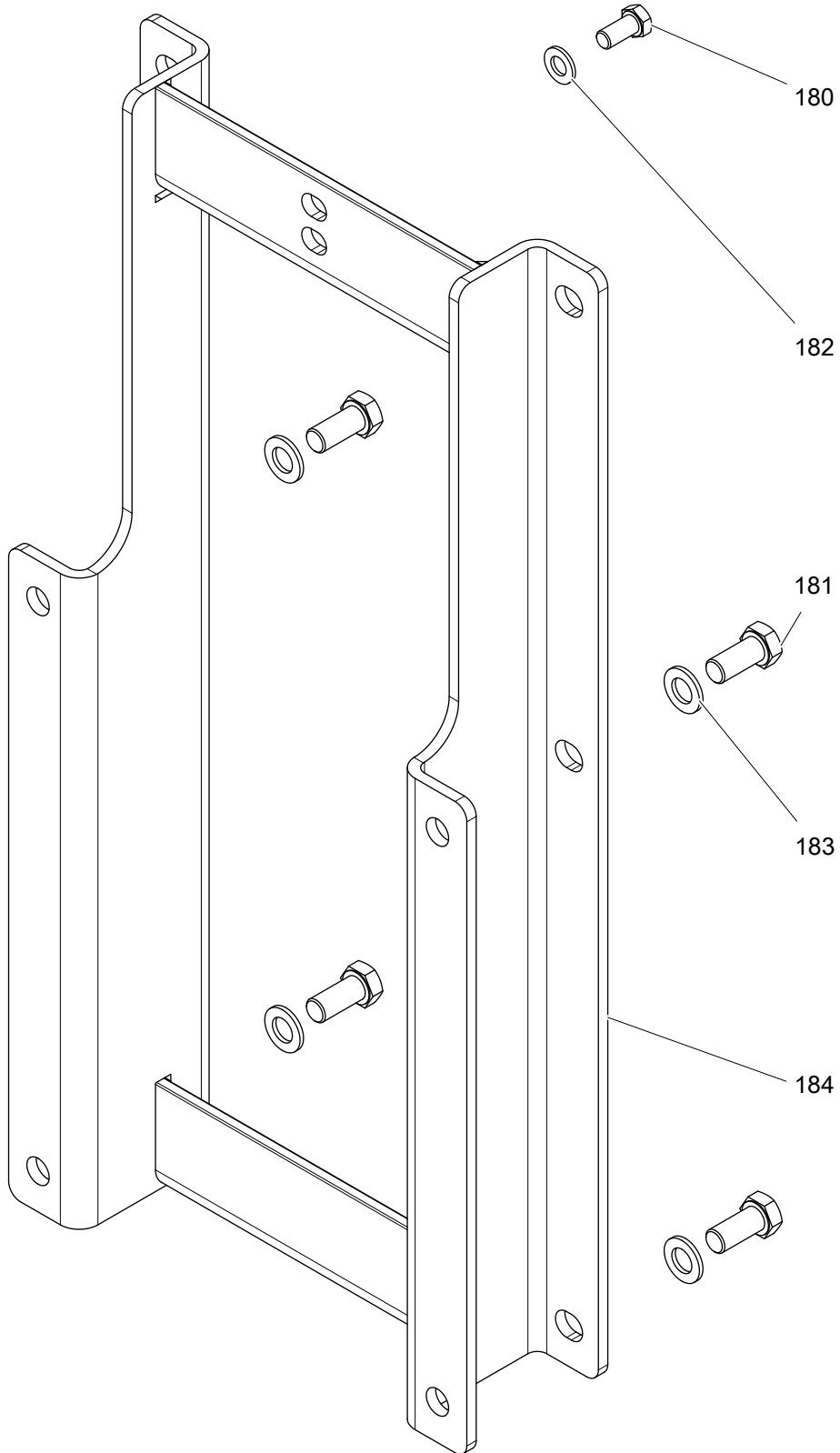
Figure 5: MSHA



20194A

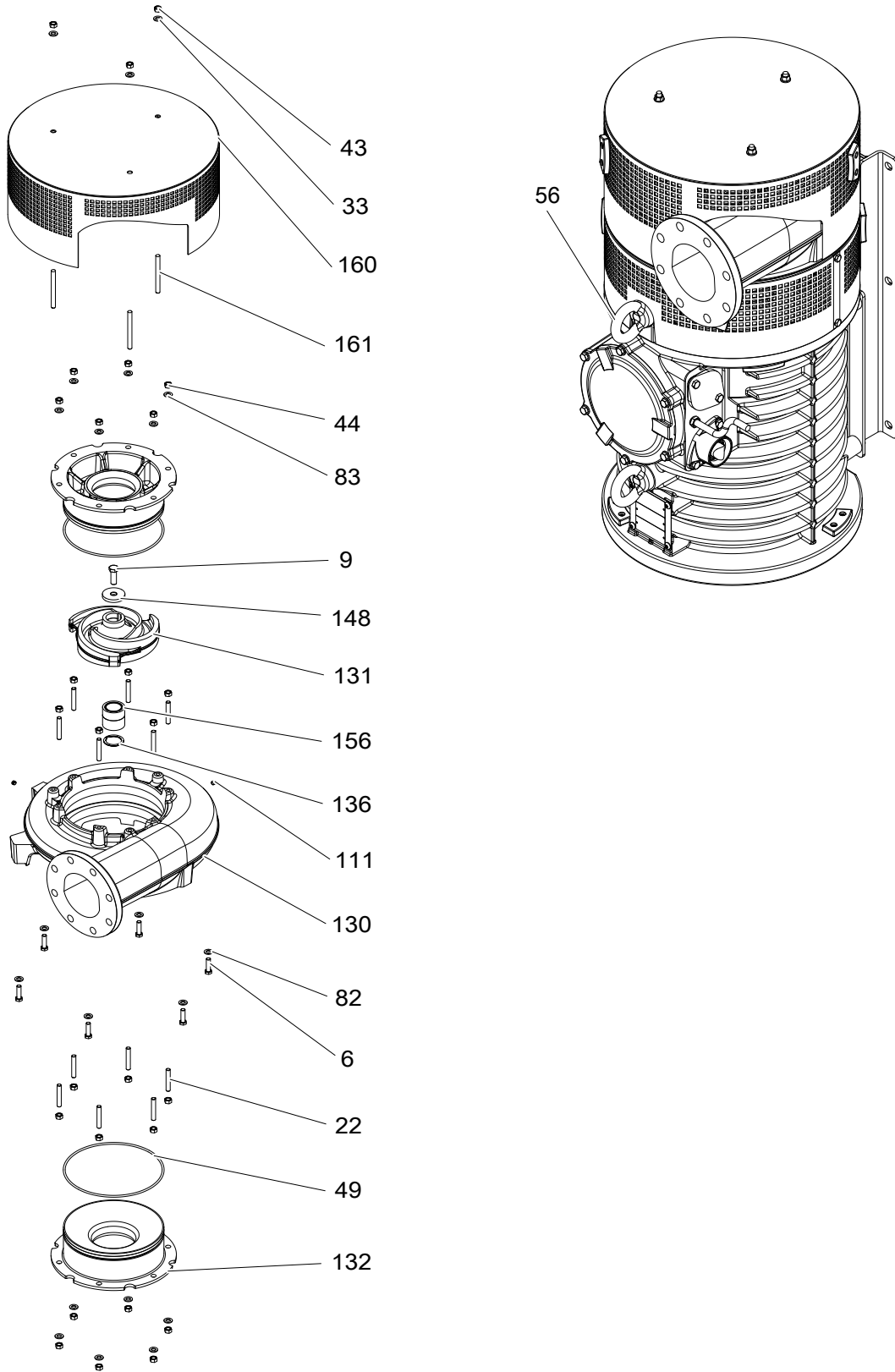
Figure 6: IEC, EN

Stand



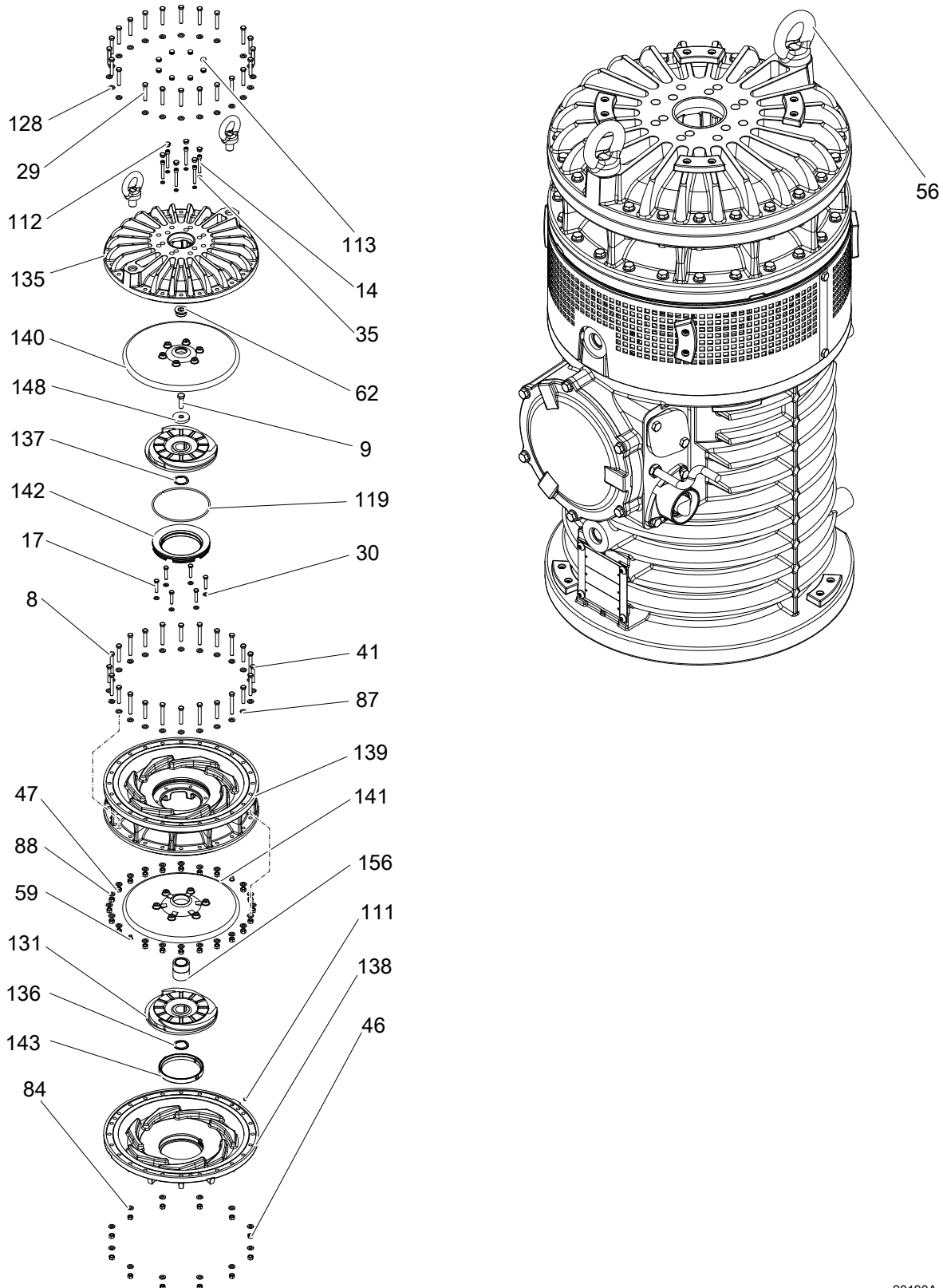
20195A

MT



20191A

HT



20190A

Spare Parts

List of parts

Pos. No	Part. No	Type	Denomination	Qty/Version		
				402	490	591
1	80 75 91		Parallel key 12X8X63	2	2	2
2	81 48 79		Hexagon head screw M10X20-A4-70	4	4	4
3	81 41 37		Hexagon head screw M10X55-A2-70	1	1	1
4	81 41 58		Hexagon head screw M12X45-A2-70	4		
4	81 41 55		Hexagon head screw M12X30-A2-70		4	2
4	82 00 72		Hex.socket hd screw M12X45-A2-70			2
			Cable entry (26)-30mm			
			Cable entry (30)-34mm			
			Cable entry (38)-42mm			
			Cable entry (40)-46mm			
			Cable entry (46)-48mm			
5	81 41 56		Hexagon head screw M12X35-A2-70	6	6	6
6	81 49 09		Hexagon head screw M12X45-A4-70	6		
6	81 41 58		Hexagon head screw M12X45-A2-70	6	6	6
7	81 41 63		Hexagon head screw M12X70-A2-70	4	4	4
8	81 41 66		Hexagon head screw M12X90-A2-70	12	12	12
9	81 42 91		Hexagon head screw M16X50-A4-70	1	1	1
10	630 68 00		Data plate USE 6306801 AS SPARE PART	1	1	1
11	81 48 24		Hexagon head screw M6X12-A4-70	2	2	2
13	81 74 03		Slotted head screw M10X30-A4-70	2	2	
13	82 00 34		Hex.socket hd screw M8X25-A2-70			2
14	82 00 60		Hex.socket hd screw M10X70-A2-70	6	6	6
15	428 22 17		Inspection screw	2	2	2
17	81 41 37		Hexagon head screw M10X55-A2-70	6	6	6
18	81 41 56		Hexagon head screw M12X35-A2-70	4		
18	81 41 55		Hexagon head screw M12X30-A2-70		4	4
19	81 41 56		Hexagon head screw M12X35-A2-70	6		
19	81 41 55		Hexagon head screw M12X30-A2-70		6	6
21	84 46 18		Stud 10X60-A2-70	2	2	
22	84 94 94		Stud 12X80-A4-70	12		
22	84 46 56		Stud M12X80-A2-70	12	12	12
23	81 41 55		Hexagon head screw M12X30-A2-70			4
24	81 41 58		Hexagon head screw M12X45-A2-70	3		
24	81 41 56		Hexagon head screw M12X35-A2-70		3	
24	81 41 55		Hexagon head screw M12X30-A2-70			3
25	82 22 39		Round nut M70X2	1	1	1
26	82 23 33		Hexagon nut M10-A4-70	4	4	
27	81 41 47		Hexagon head screw M12X60-A2-70	12	12	12
28	81 41 58		Hexagon head screw M12X45-A2-70	9	9	9

Pos. No	Part. No	Type	Denomination	Qty/Version		
				402	490	591
29	81 41 63		Hexagon head screw M12X70-A2-70	22	22	22
30	82 35 76		Plain washer 10-A4-170	6	6	6
32	82 35 20		Plain washer 12-A2-170	4		4
32	82 48 65		Spring washer DIN 128-A-12-A2		4	
33	82 35 77		Plain washer A4-A170 Hydraulic end: Stainless steel	3		
33	82 35 20		Plain washer 12-A2-170 Hydraulic end: Grey cast iron	3	3	3
34	82 36 87		Plain washer 10.5X28X2	2	2	
35	82 50 16		Lock washer	6	6	6
36	82 48 65		Spring washer DIN 128-A-12-A2 Cable entry (40)-43mm		4	
36	82 35 20		Plain washer 12-A2-170 Cable entry (42)-44mm FF version only			2
37	82 73 90		O-ring 19.2X3 NBR	2	2	2
38	82 51 39		Lock washer	1	1	1
39	83 39 61		Cable washer	2	2	
40	84 25 20		Seal ring	1	1	1
41	81 41 63		Hexagon head screw M12X70-A2-70	12	12	12
42	428 22 17		Inspection screw	2		
43	82 23 35		Hexagon nut M12-A4-70 Hydraulic end: Stainless steel	3		
43	82 23 59		Hexagon nut M12-A2-70 Hydraulic end: Grey cast iron	3	3	3
44	82 23 35		Hexagon nut M12-A4-70 Hydraulic end: Stainless steel	24		
44	82 23 59		Hexagon nut M12-A2-70 Hydraulic end: Grey cast iron	24	24	24
45	82 74 06		O-ring 69.2X5.7 NBR	1		
45	82 74 04		O-ring 59.2X5.7 NBR		1	
46	82 23 59		Hexagon nut M12-A2-70	12	12	12
47	82 23 59		Hexagon nut M12-A2-70	22	22	22
48	82 75 00		O-ring 269.3X5.7 NBR	1	1	1
49	82 75 01		O-ring 279.3X5.7 NBR	2	2	2
50	82 75 09		O-ring 419.3X5.7 NBR	1	1	1
51	82 75 13		O-ring 499.3X5.7 NBR	1	1	1
52	82 35 20		Plain washer 12-A2-170	4		4
52	82 48 65		Spring washer DIN 128-A-12-A2		4	
53	775 13 02		Connection plate	1	1	1
54	82 35 20		Plain washer 12-A2-170	6		6
54	82 48 65		Spring washer DIN 128-A-12-A2		6	
55	80 52 61		Grooved pin	1	1	1
56	82 30 95		Lifting eye bolt	2	2	2
57	82 35 20		Plain washer 12-A2-170	6	6	6
58	84 26 57		Sealing washer	2	2	2
59	82 69 60		Protective plug	2	2	2
60	82 69 60		Protective plug		4	4
61	82 69 70		Protective plug	2	2	2
62	82 71 14		Plug	1	1	1
63	82 35 20		Plain washer 12-A2-170	12		12
63	82 48 65		Spring washer DIN 128-A-12-A2		12	
64	84 09 45		Ball bearing	2	2	2

Pos. No	Part. No	Type	Denomination	Qty/Version		
				402	490	591
65	305 98 02		Gland screw	1		
66	82 40 85		Plain washer 16.5X20.5X2-A2-70	2		
66	282 96 00		Plate	2		
67	84 35 67		Seal sleeve	1		
67	282 95 00		Plug	1		
68	613 86 00		Insulating plate			1
69	82 74 96		O-ring 229.3X5.7 NBR			1
72	280 17 01		Terminal board unit	1	1	1
72,1	82 26 02		Hexagon nut	12	12	12
72,2	82 36 87		Plain washer 10.5X28X2	12	12	12
72,3	83 39 61		Cable washer	12	12	12
72,4	83 47 52		Closing link	3	3	3
72,5	83 51 51		Connection term boar	1	1	1
73	491 53 01		Detector unit	1	1	1
74	601 46 00		Lock washer	1	1	1
75	605 61 00		Entrance flange	1-2		
			Cable entry (32)-35mm			
			Cable entry (35)-38mm			
			Cable entry (38)-41mm			
			Cable entry (41)-44mm			
75	394 81 15		Motor cable entr.uni		1-2	
75	404 37 00		Entrance flange			1
75	542 14 00	(Ex)	Entrance flange			1
			Cable entry (26)-30mm			
			Cable entry (30)-34mm			
			Cable entry (38)-42mm			
			Cable entry (40)-46mm			
			Cable entry (46)-48mm			
76	82 41 39		Plain washer 54.5X70X2-A2-70	4-8		
			Cable entry (35)-38mm			
			Cable entry (38)-41mm			
			Cable entry (41)-44mm			
76	82 41 36		Plain washer 46.5X70X2-A2-70	8		4
76	82 41 35		Plain washer 43.5X70X2-A2-70		2-4	4
76	82 41 31		Plain washer 35.5X70X2-A2-70			4
			Cable entry (26)-30mm			
			Cable entry (30)-34mm			
			Cable entry (42)-44mm FF version only			
76	82 41 37		Plain washer 48.5X70X2-A2-70			4
			Cable entry (40)-46mm			
			Cable entry (46)-48mm			
77	84 19 35		Seal sleeve	2-4		
77	84 19 33		Seal sleeve	2-4		
77	84 19 34		Seal sleeve	2		
77	84 19 32		Seal sleeve	4		
77	404 21 04		Sleeve		1-2	
77	404 21 02		Sleeve			2
77	81 08 02		Seal sleeve			2
			Cable entry (26)-30mm			

Pos. No	Part. No	Type	Denomination	Qty/Version		
				402	490	591
77	81 08 03		Seal sleeve Cable entry (26)-30mm			2
77	81 08 04		Seal sleeve Cable entry (30)-34mm			2
77	81 08 05		Seal sleeve Cable entry (30)-34mm			2
77	81 08 08		Seal sleeve Cable entry (38)-42mm			2
77	81 08 09		Seal sleeve Cable entry (38)-42mm Cable entry (40)-46mm			2
77	81 08 10		Seal sleeve Cable entry (40)-46mm			2
77	81 08 11		Seal sleeve Cable entry (40)-46mm			2
77	81 08 12		Seal sleeve Cable entry (46)-48mm			2
78	280 06 01		El-lead through 6-leads 60 Hz 380V D P2=104kW/140hp 6-leads 50 Hz s 500V-550V D P2=90kW 6-leads 60 Hz 575V-600V D P2=104kW/ 140hp 6-leads 50 Hz 400V-440V D P2=90kW 6-leads 60 Hz 480V D P2=104kW/140hp 6-leads 60 Hz 575V D P2=104kW/140hp 6-leads 50 Hz s 380V-400V D 660V-690V Y P2=90kW 6-leads 60 Hz 440V-460V D P2=104kW/ 140hp 6-leads 50 Hz 400V D P2=90kW 6-leads 60 Hz s 400V D P2=104kW/140hp 6-leads 50 Hz 525V-550V D 1000V Y P2=90kW	1	1	1
78	438 23 01		El-lead through 9-leads 50 Hz 500V Y// 1000V YSER P2=90kW 9-leads 60 Hz 550V Y// 1100V YSER P2=104kW/140hp	1		1
79	611 14 01		Ring	1-2		
79	603 65 00		Ring Cable entry (42)-44mm FF version only			1
79	604 89 02		Ring Cable entry (26)-30mm Cable entry (30)-34mm Cable entry (38)-42mm Cable entry (40)-46mm Cable entry (46)-48mm			1
80	341 66 00		Cover	1		
80	320 05 01	(Ex)	Cover		1	
81	433 47 06		Plate 70 MM	1-2		1
82	82 35 77		Plain washer A4-A170 Hydraulic end: Stainless steel	6		
82	82 35 20		Plain washer 12-A2-170 Hydraulic end: Grey cast iron	6	6	6
83	82 35 77		Plain washer A4-A170 Hydraulic end: Stainless steel	12		
83	82 35 20		Plain washer 12-A2-170 Hydraulic end: Grey cast iron	12	12	12
84	82 35 20		Plain washer 12-A2-170	12	12	12
85	94 19 84		Motor cable subcab SUBCAB 4G35+S(2x0,5) 35 - 37mm Star delta possible	*		
85	94 19 85		Motor cable subcab SUBCAB 3x50+2G35/2+S(2x0,5) 35 - 37mm	*		
85	94 19 86		Motor cable subcab SUBCAB 3x70+2G35/2+S(2x0,5) 38 - 41mm	*		

Pos. No	Part. No	Type	Denomination	Qty/Version		
				402	490	591
85	94 21 10		Motor cable SUBCAB 4AWG/3-2-1-GC 32,80 - 34,80mm Star delta possible	*		
85	94 21 11		Motor cable SUBCAB 1AWG/3-2-1-GC 40,70 - 42,70mm Star delta possible	*	*	
85	94 19 83		Motor cable subcab SUBCAB 4G25+S(2x0,5) 32 - 34mm Star delta possible	*		
85	94 19 96		Motor cable subcab SUBCAB S3x50+3x25/3+S(4x0,5) 38 - 40mm	*		*
85	94 19 97		Motor cable subcab SUBCAB S3x70+3x35/3+2S(2x0,5) 42 - 44mm	*		
86	94 19 22		Control cable subcab 7X1,5 OD=15-17 MM	*		
87	82 35 20		Plain washer 12-A2-170	24	24	24
88	82 35 20		Plain washer 12-A2-170	22	22	22
89	82 35 20		Plain washer 12-A2-170			4
90	382 57 03		Shaft unit SS Hydraulic end: Stainless steel	1		
90	382 57 08		Shaft unit Hydraulic end: Grey cast iron	1	1	1
92	82 75 09		O-ring 419.3X5.7 NBR	1	1	1
93	81 48 24		Hexagon head screw M6X12-A4-70	1	1	1
94	81 41 04		Hexagon head screw M8X20-A2-70			6
95	560 86 30		Stator 42-26-2f 6-leads 60 Hz 380V D P2=104kW/140hp	1		1
95	560 86 02		Stator 42-26-2f 12-leads 60 Hz 460V DSER 380V Y// P2=104kW/140hp	1		
95	560 86 38		Stator 42-26-2f 6-leads 50 Hz 380V-400V D 660V-690V Y P2=90kW	1	1	1
95	560 86 40		Stator 42-26-2f 6-leads 60 Hz 440V-460V D P2=104kW/ 140hp	1		
95	560 86 44		Stator 42-26-2f 6-leads 50 Hz 400V D P2=90kW 6-leads 60 Hz s 400V D P2=104kW/140hp	1		1
95	560 86 48		Stator 42-26-2f 6-leads 50 Hz 400V-440V D P2=90kW 6-leads 60 Hz s 480V D P2=104kW/140hp	1	1	1
95	560 86 52		Stator 42-26-2f 6-leads 60 Hz 575V D P2=104kW/140hp 6-leads 50 Hz 500V-550V D P2=90kW	1		1
95	560 86 55		Stator 42-26-2f 6-leads 60 Hz s 575V-600V D P2=104kW/ 140hp	1	1	
95	560 86 59		Stator 42-26-2f 6-leads 50 Hz 525V-550V D 1000V Y P2=90kW 9-leads 50 Hz 500V Y// 1000V YSER P2=90kW 9-leads 60 Hz 550V Y// 1100V YSER P2=104kW/140hp	1		1
96	303 09 00		Earthing plate FM/PTB			3
97	337 09 00		Earthing plate			3
98	82 48 61		Spring washer DIN 128-A-8-A2			6
99	82 35 20		Plain washer 12-A2-170	12	12	12
100	384 03 05		Mechanical seal	1	1	1
101	82 03 24		Hex.socket hd screw M10X12-A2-70	4	4	4
102	82 74 67		O-ring 69.5X3 NBR	1-2		

Pos. No	Part. No	Type	Denomination	Qty/Version		
				402	490	591
102	82 74 06		O-ring 69.2X5.7 NBR			1
104	82 66 73		Plug	2	2	2
105	534 12 00		Ring	1		
			Hydraulic end: Stainless steel			
105	596 65 00		Plain washer	1		
			Hydraulic end: Grey cast iron			
105	596 65 00		Plain washer		1	1
106	400 67 01		Protective casing PU	1		
106	400 67 00		Protective casing NBR	1	1	1
109	382 83 00		Wear protection	1	1	1
110	80 23 05		Parallel pin CP-H8-4X10-1650	1	1	1
111	82 66 73		Plug	1	1	1
			MT			
111	82 66 73		Plug	2	2	2
			HT			
112	82 69 51		Protective plug M20	6	6	6
113	82 69 51		Protective plug M20	8		8
			Drilled acc. to: EN 1092-2 tab. 11			
113	82 69 50		Protective plug M20	8	8	8
			Drilled acc. to: ASME B 16.5-1996;tab.11			
114	82 69 52		Protective plug M30	4		
114	82 69 53		Protective plug M33		4	4
115	683 14 30		Mechanical seal	1	1	1
118	702 23 00		Plate	1	1	1
119	777 96 00		Spring ring, solid	1	1	1
120	83 42 65		Terminal block	4	4	4
121	80 57 77		Tension pin	1	1	1
122	382 77 00		Washer	1	1	1
123	302 21 00		Compression spring	12	12	12
124	382 74 00		Flange compl.	1	1	1
125	382 81 00		Flange	1	1	1
126	81 48 24		Hexagon head screw M6X12-A4-70	6	6	6
127	382 78 00		Impeller unit	1	1	1
128	82 35 20		Plain washer 12-A2-170	22	22	22
129	82 73 90		O-ring 19.2X3 NBR	2		
130	376 32 20		Pump housing	1		
			Hydraulic end: Stainless steel			
130	376 32 21		Pump housing	1		
			Hydraulic end: Stainless steel Drilled acc. to: EN 1092-2 tab. 9 ASME B 16.5-1996;tab.8			
130	376 32 00		Pump housing	1	1	1
			Hydraulic end: Grey cast iron			
130	376 32 01		Pump housing	1	1	1
			Hydraulic end: Grey cast iron Drilled acc. to: ASME B 16.5-1996;tab.8 EN 1092-2 tab. 9			
131	385 62 06		Impeller	1		1
			231 MT 50Hz Mtrl. Alloyed white iron (hardened, high chrome)			
131	385 62 07		Impeller	1	1	1
			232 MT 50Hz Mtrl. Alloyed white iron (hardened, high chrome)			
			232 MT 60Hz Mtrl. Alloyed white iron (hardened, high chrome)			
131	728 92 00		Impeller	2		2
			243 HT 50Hz Mtrl. Alloyed white iron (hardened, high chrome)			
131	728 92 10		Impeller	2	2	2
			244 HT 60Hz Mtrl. Alloyed white iron (hardened, high chrome)			
131	385 62 01		Impeller	1		
			251 MT 50Hz Mtrl. Stainless steel, castings			

Pos. No	Part. No	Type	Denomination	Qty/Version		
				402	490	591
131	730 43 00		Impeller 263 HT 50Hz Mtrl. Stainless steel, castings	2		
131	730 43 10		Impeller 264 HT 60Hz Mtrl. Stainless steel, castings	2		
132	382 80 02		Suction cover uncoat	2		
132	382 79 02		Suction cover NBR	2	2	2
132	382 79 03		Suction cover PU	2		
133	83 42 34		End sleeve 25 MM2; L=15 MM 6-leads 60 Hz 380V D P2=104kW/140hp 6-leads 50 Hz s 500V-550V D P2=90kW 6-leads 60 Hz 575V-600V D P2=104kW/ 140hp 12-leads 60 Hz 460V DSER 380V Y// P2=104kW/140hp 6-leads 50 Hz 400V-440V D P2=90kW 6-leads 60 Hz 480V D P2=104kW/140hp 6-leads 60 Hz 575V D P2=104kW/140hp 6-leads 50 Hz s 380V-400V D 660V-690V Y P2=90kW 6-leads 60 Hz 440V-460V D P2=104kW/ 140hp 6-leads 50 Hz 400V D P2=90kW 6-leads 60 Hz s 400V D P2=104kW/140hp	6-12	6	6-9
133	83 42 39		End sleeve 16 MM2; L=12 MM 9-leads 50 Hz 500V Y// 1000V YSER P2=90kW 6-leads 50 Hz 525V-550V D 1000V Y P2=90kW	6-9	6	
134	681 58 00		Plate SENSOR CONNECTED T1-T2	2	2	
135	400 59 10		Diffuser coat. NBR	1	1	1
135	400 59 11		Diffuser coat. NBR Drilled acc. to: EN 1092-2 tab. 11	1		1
135	400 59 15		Diffuser coat. NBR Drilled acc. to: ASME B 16.5-1996;tab.11	1	1	1
135	400 59 20		Diffuser coat. PU	1		
135	400 59 21		Diffuser coat. PU Drilled acc. to: EN 1092-2 tab. 11	1		
135	400 59 25		Diffuser coat. PU Drilled acc. to: ASME B 16.5-1996;tab.11	1		
136	280 46 00		Adjusting washer 0.5 MM MT Diffusor material: PU	4		
136	280 46 00		Adjusting washer 0.5 MM MT Diffusor material: NBR	2	2	2
136	280 46 00		Adjusting washer 0.5 MM HT	5	5	5
136	280 46 01		Washer 0.3 MM HT	3	3	3
137	280 46 00		Adjusting washer 0.5 MM HT	2	2	2
137	280 46 01		Washer 0.3 MM HT	2	2	2
138	382 62 01		Diffuser coat. NBR	1	1	1
138	382 62 02		Diffuser coat. PU	1		
139	400 61 06		Diffuser coat. NBR	1	1	1
139	400 61 07		Diffuser coat. PU	1		
140	409 21 01		Diffuser disc coated NBR	1	1	1
140	409 21 02		Diffuser disc coated PU	1		
141	409 23 01		Diffuser disc coated NBR	1	1	1
141	409 23 02		Diffuser disc coated PU	1		
142	400 57 05		Wear ring NBR	1	1	1

Pos. No	Part. No	Type	Denomination	Qty/Version		
				402	490	591
142	400 57 06		Wear ring PU	1		
143	382 72 03		Wear ring NBR	1	1	1
143	382 72 04		Wear ring PU	1		
144	82 97 60		Cap 10X20 PVC SUBCAB 4G35+S(2x0,5) 35 - 37mm Star delta possible	1		
144	82 70 86		Cap 6X16 PVC SUBCAB 3x70+2G35/2+S(2x0,5) 38 - 41mm SUBCAB 3x50+2G35/2+S(2x0,5) 35 - 37mm	1		
144	82 70 88		Cap 8X16 PVC SUBCAB 4G25+S(2x0,5) 32 - 34mm Star delta possible	2		
144	82 97 60		Cap 10X20 PVC SUBCAB 4G35+S(2x0,5) 35 - 37mm Star delta possible	2		
144	82 97 61		Cap 11X25 PVC SUBCAB S3x50+3x25/3+S(4x0,5) 38 - 40mm	1		1
144	82 70 87		Cap 7X16 PVC SUBCAB S3x70+3x35/3+2S(2x0,5) 42 - 44mm	1		
145	627 79 00		Certificate plate MSHA		1	
145	630 69 00		Certificate plate EN			1
145	630 69 01	(Ex)	Certificate plate IECEX			1
146	82 97 85		Cap 38X45 PVC SUBCAB 3x70+2G35/2+S(2x0,5) 38 - 41mm	1		
146	82 97 82		Cap SUBCAB 4AWG/3-2-1-GC 32,80 - 34,80mm Star delta possible	2		
146	82 97 87		Cap 42X45 PVC SUBCAB S3x70+3x35/3+2S(2x0,5) 42 - 44mm SUBCAB 1AWG/3-2-1-GC 40,70 - 42,70mm Star delta possible	2	2	
146	82 97 81		Cap 32X45 PVC SUBCAB 4G25+S(2x0,5) 32 - 34mm Star delta possible	2		
146	82 97 84		Cap 35X45 PVC SUBCAB S3x50+3x25/3+S(4x0,5) 38 - 40mm SUBCAB 4G35+S(2x0,5) 35 - 37mm Star delta possible SUBCAB 4G35+S(2x0,5) 35 - 37mm SUBCAB 3x50+2G35/2+S(2x0,5) 35 - 37mm	1-2		1
147	83 43 64		Cable lug	1		1
148	382 10 00		Plain washer	1	1	1
149	382 43 04		Stator housing	1		
149	382 43 05		Stator housing PREPARED FOR ZINC ANODES	1		
149	441 50 00	(Ex)	Stator housing		1	
149	394 56 00	(Ex)	Stator housing			1
150	393 08 01	(Ex)	Cover			1
151	382 46 00		Cover	1		
151	393 00 00	(Ex)	Cover		1	
151	590 56 00	(Ex)	Connection housing			1
152	382 47 05		Bearing housing low.	1		
152	382 47 04	(Ex)	Bearing housing		1	1
153	706 60 00		Oil housing	1	1	1
154	382 49 04		Bearing cover	1		

Pos. No	Part. No	Type	Denomination	Qty/Version		
				402	490	591
154	528 83 00	(Ex)	Bearing cover		1	1
155	382 50 01		Diffuser coat. PU	1		
155	382 50 00		Diffuser coat. NBR	1	1	1
156	382 85 02		Sleeve	1		
			Hydraulic end: Stainless steel			
156	526 33 00		Sleeve compl.	1	1	1
			Hydraulic end: Grey cast iron			
157	789 89 03		Zinc anode kit HT	1		
157,1	82 00 15		Hex.socket hd screw M6X20-A2-70	20		
157,2	82 00 18		Hex.socket hd screw M6X30-A2-70	6		
157,3	82 27 26		Lock nut M6-A4-70	6		
157,4	82 37 93		Plain washer 9021-6,4X18X1,6	12		
157,5	84 53 55		Anode	16		
157	789 89 02		Zinc anode kit MT	1		
157,1	82 00 15		Hex.socket hd screw M6X20-A2-70	12		
157,2	82 00 18		Hex.socket hd screw M6X30-A2-70	12		
157,3	82 27 26		Lock nut M6-A4-70	12		
157,4	82 37 93		Plain washer 9021-6,4X18X1,6	24		
157,5	84 53 55		Anode	18		
158	709 38 01		Strainer	1		
			Hydraulic end: Stainless steel			
158	709 38 00		Strainer unit	1	1	1
			Hydraulic end: Grey cast iron			
159	709 39 01		Strainer	1		
			Hydraulic end: Stainless steel			
159	709 39 00		Strainer unit	1	1	1
			Hydraulic end: Grey cast iron			
160	376 34 01		Strainer compl. SS	1		
			Hydraulic end: Stainless steel			
160	376 34 00		Strainer compl.	1	1	1
			Hydraulic end: Grey cast iron			
161	84 95 05		Stud 12X140-A4-70	3		
			Hydraulic end: Stainless steel			
161	298 99 00		Stud	3	3	3
			Hydraulic end: Grey cast iron			
165	82 46 39		Roller bearing	1	1	1
166	82 59 06		Retaining ring SGA 40	1	1	1
167	82 62 32		Retaining ring SGH 110	1	1	1
168	82 62 34		Retaining ring SGH 115	1	1	1
169	82 74 19		O-ring 134.3X5.7 NBR	1	1	1
170	471 73 00		Washer	1	1	1
171	471 74 00		Bearing housing	1		
171	471 74 02	(Ex)	Bearing housing		1	1
172	497 22 00		Washer	1	1	1
173	498 36 00		Sleeve	1	1	1
180	81 41 54		Hexagon head screw M12X25-A2-70	1		
181	84 34 02		Hexagon head screw M16X35-A2-70	4		
182	82 35 20		Plain washer 12-A2-170	1		
183	82 35 23		Plain washer 16-A2-A-170	4		
184	376 37 01		Stand compl.	1		
192	82 97 65		Cap	1		
193	82 66 73		Plug	3	3	3
800	733 42 01		O-ring kit MT, HT	1	1	1
800,37	82 73 90		O-ring 19.2X3 NBR	2	2	2

Pos. No	Part. No	Type	Denomination	Qty/Version		
				402	490	591
800,45	82 74 04		O-ring 59.2X5.7 NBR	1	1	1
800,45	82 74 06		O-ring 69.2X5.7 NBR	1	1	1
800,48	82 75 00		O-ring 269.3X5.7 NBR	1	1	1
800,49	82 75 01		O-ring 279.3X5.7 NBR	2	2	2
800,50	82 75 09		O-ring 419.3X5.7 NBR	1	1	1
800,51	82 75 13		O-ring 499.3X5.7 NBR	1	1	1
800,69	82 74 96		O-ring 229.3X5.7 NBR	1	1	1
800,92	82 75 09		O-ring 419.3X5.7 NBR	1	1	1
800,102	82 74 06		O-ring 69.2X5.7 NBR	1	1	1
800,102	82 74 67		O-ring 69.5X3 NBR	2	2	2
800,129	82 73 90		O-ring 19.2X3 NBR	2	2	2
800,169	82 74 19		O-ring 134.3X5.7 NBR	1	1	1
801	789 89 02		Zinc anode kit MT	1		
801	789 89 03		Zinc anode kit HT	1		
900	601 90 24		Basic repair kit MT, HT	1	1	1
901	90 17 52		Oil ISO VG 32	*	*	*
902	90 20 62		Grease	*	*	*
903	90 20 62		Grease	*	*	*
904	90 20 62		Grease	*	*	*



ООО «Бауманс Груп» - официальный партнер фирмы Flygt в России.

Тел: +7 495 121 49 50

Эл. почта: info@baumgroup.ru

Сайт: www.baumgroup.ru